



King's Garden Phase II 120 & 240 Sq. Yards Luxurious Bungalows

Located on
Scheme 33, Near Saforah Chowrangi

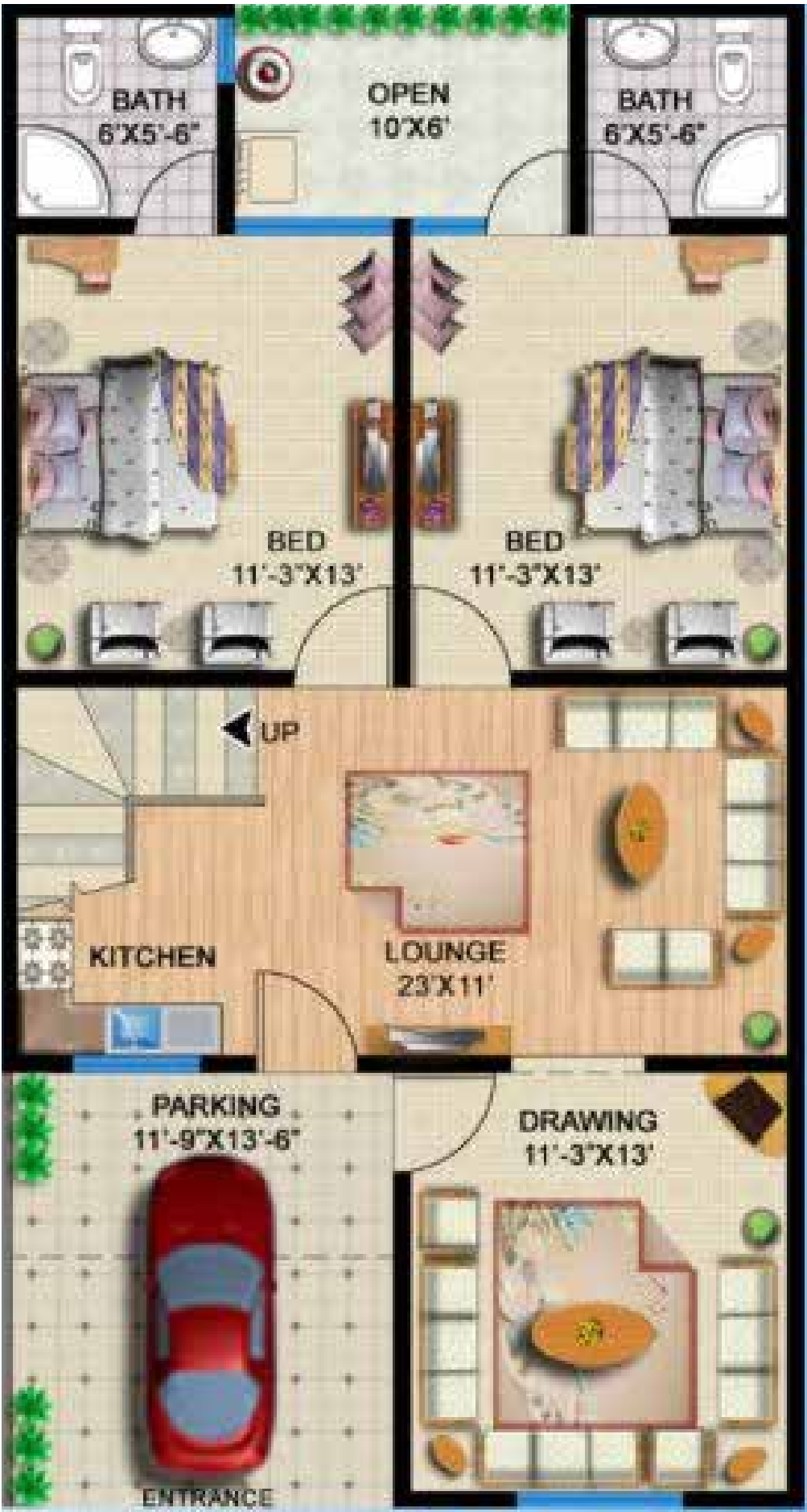


120 SQ YARDS LUXURY HOMES

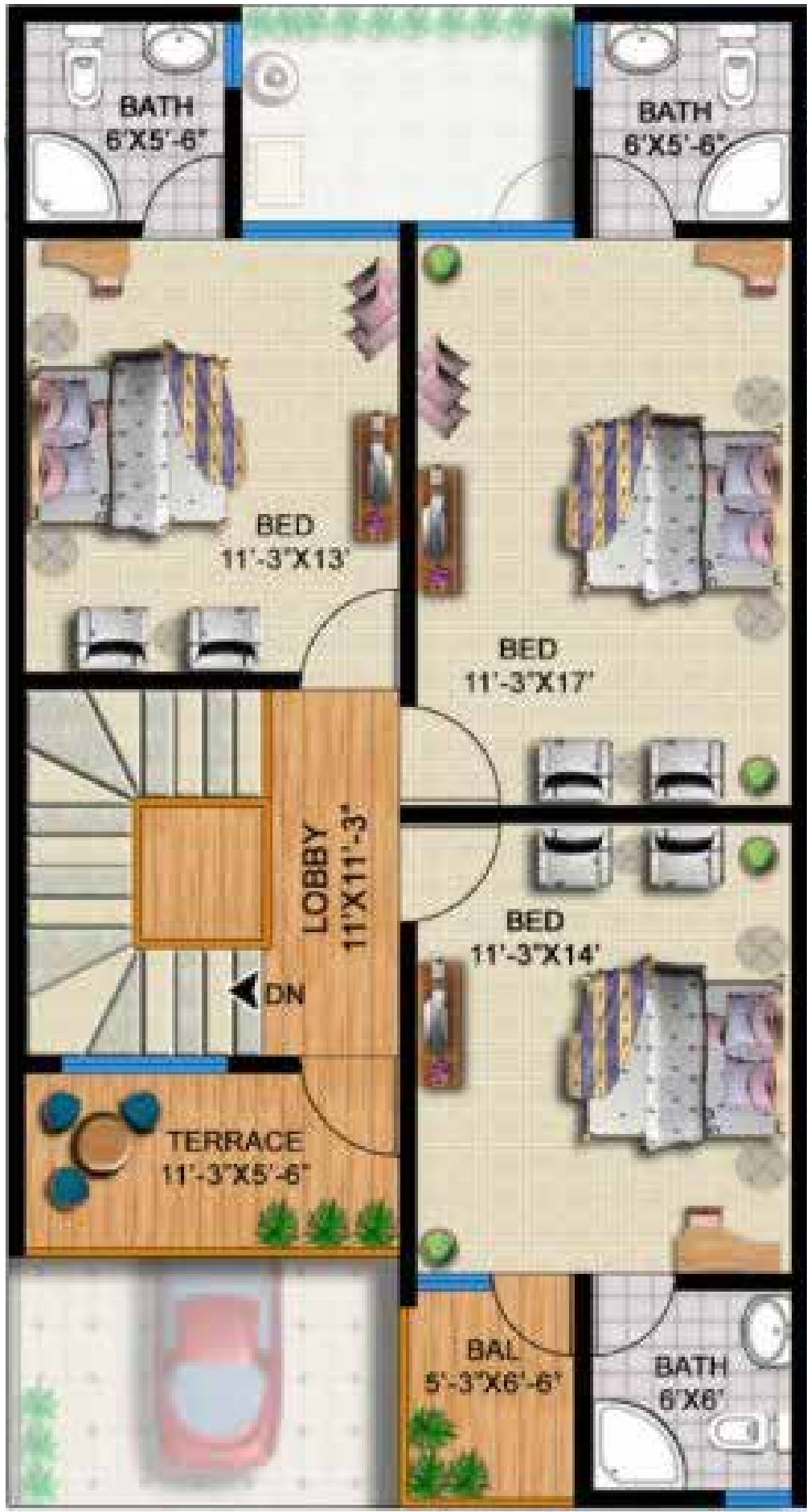
240 SQ YARDS LUXURY HOMES

120 SQ YARDS LUXURY HOMES

INTERNAL PLAN



GROUND FLOOR PLAN



FIRST FLOOR PLAN

120 SQ YARDS LUXURY HOMES

PAYMENT PLAN

MODE OF PAYMENT	AMOUNT
ON BOOKING	5,000,000
MONTHLY INSTALMENTS (150,000 x 24) <i>Start from very next month from the date of booking</i>	3,600,000
HALF YEARLY (400,000 x 4)	1,600,000
ON FOUNDATION	550,000
ON PLINTH	550,000
ON SLAB CASTING (275,000X2)	550,000
ON BLOCK MASONRY	550,000
ON PLASTER	550,000
ON FINISHING	550,000
ON POSSESSION	1,500,000
TOTAL COST	15,000,000

EXTRA CHARGES

CORNER	400,000
WEST OPEN	250,000
PARK FACING	250,000

IMPORTANT NOTE

1. All instalments must be paid by the allottee strictly as per schedule agreed by the allottee, from 1st to 10th of each month and the allottee shall abide by the terms and conditions of the booking application form.
2. All the extra charges will be payable within 180 days from the date of booking.
3. The allocation of unit shall remain provisional unit the company receives full and final payment.
4. Documentation charges of lease, load and connection charges for Gas, Electricity, Water & severage etc will be charged as ectra demanded by the companay as these charges are not included in the above mentiond cost.
5. All discounts are subject to regular payment as per decide schedule.

Read, Understood & Accepted

Signature

240 SQ YARDS LUXURY HOMES

INTERNAL PLAN



GROUND FLOOR PLAN



FIRST FLOOR PLAN

240 SQ YARDS LUXURY HOMES

PAYMENT PLAN

MODE OF PAYMENT	AMOUNT
ON BOOKING	5,500,000
MONTHLY INSTALMENTS (250,000 x 24) <i>Start from very next month from the date of booking</i>	6,000,000
HALF YEARLY (1,000,000 x 4)	4,000,000
ON FOUNDATION	700,000
ON PLINTH	700,000
ON SLAB CASTING (350,000X2)	700,000
ON BLOCK MASONRY	700,000
ON PLASTER	700,000
ON FINISHING	700,000
ON POSSESSION	1,300,000
TOTAL COST	21,000,000

EXTRA CHARGES	
CORNER	500,000
WEST OPEN	200,000
PARK FACING	200,000
ROAD FACING	200,000

- IMPORTANT NOTE
1. All instalments must be paid by the allottee strictly as per schedule agreed by the allottee, from 1st to 10th of each month and the allottee shall abide by the terms and conditions of the booking application form.

2. All the extra charges will be payable within 180 days from the date of booking.

3. The allocation of unit shall remain provisional unit the company receives full and final payment.

4. Documentation charges of lease, load and connection charges for Gas, Electricity, Water & severage etc will be charged as ectra demanded by the companay as these charges are not included in the above mentiond cost.

5. All discounts are subject to regular payment as per decide schedule.

Read, Understood & Accepted

Signature



THANK YOU

0310-5932360 | 0310- 8152360

